

WODA2

→ Tool, Equipment and Process Management System

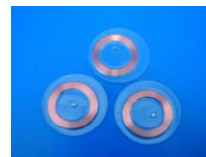
The **WODA2** software is based on the RFID technology and guarantees an effectual monitoring, transparency, availability and documentation of all properties and process expiries in companies!

System description:

The system **WODA2** contains an extensive software and hardware equipment, equipped with many features. Of this object and monitoring management system (machines, tools, materials, manpower ...) encompasses **3 main components**:

1) **WODA2** Transponder

- For the marking of objects and people
- Tools and equipment are labeled by RFID tags and the consumable material by barcodes. Personnel will be identified with special personnel transponders.



TRP Clear Disc 125kHz



TRP World Tag 125kHz



TRP PU Tag 125kHz



2) **WODA2** Handheld Reader

- For the identification of the RFID tags and barcodes
- Because of the identification of the object transponders by the handheld reader and the data storage in the **WODA2** software you know at any time which worker has borrowed an object as well as the current position and holding time.



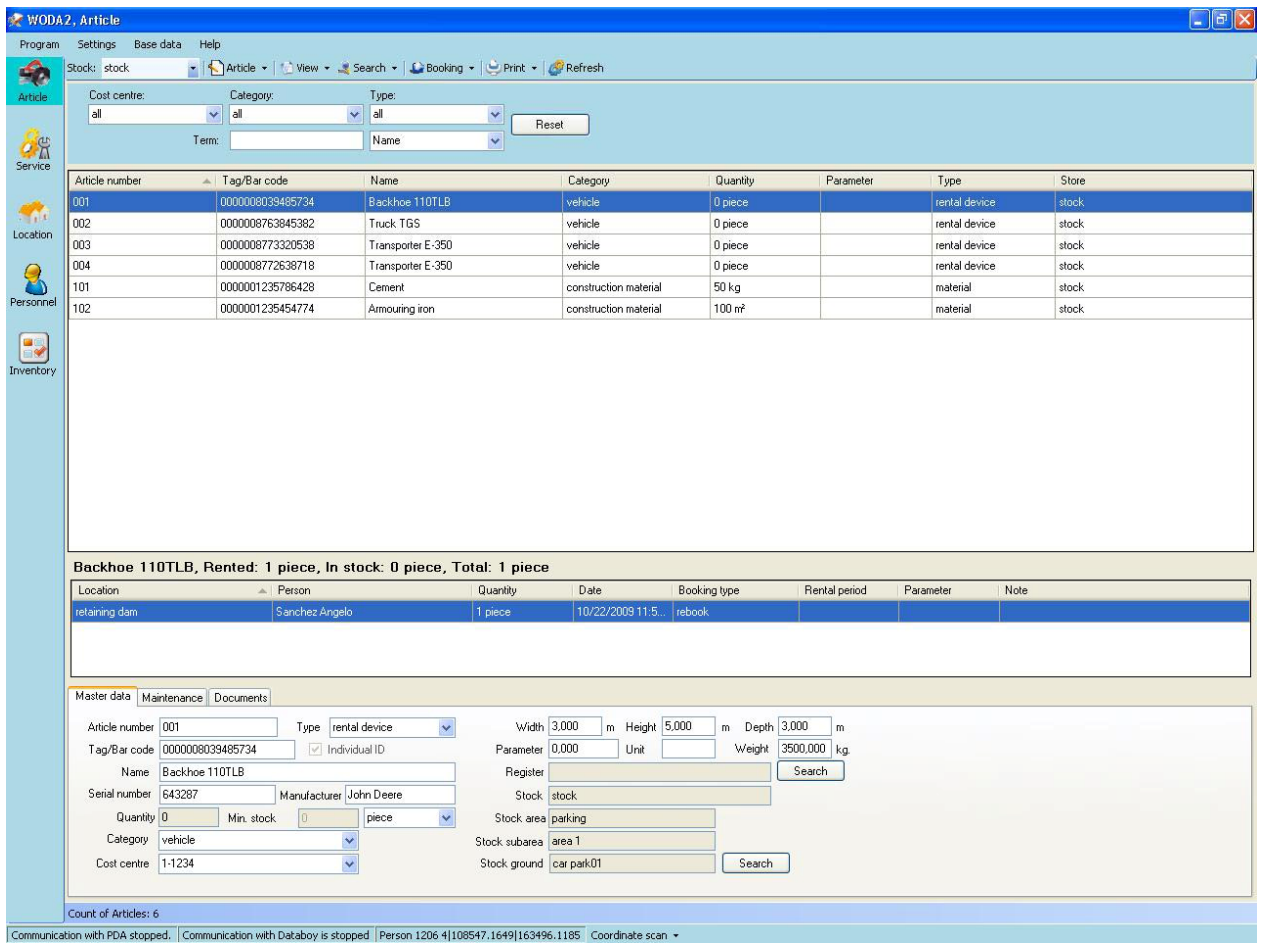
HLG Databoy



HLG TDS Recon

3) WODA2 Software

- For the management, maintenance, monitoring and efficient provision of tools, materials, machines, locations and manpower
- Each of your construction sites receives an identification number (cost centre). The data of the materials, tools, and personnel data are stored with a time stamp, date and employee number in the software for the respective building site.



WODA2, Article

Program Settings Base data Help

Stock: stock Article View Search Booking Print Refresh

Cost centre: all Category: all Type: all Reset

Term: Name

Article number	Tag/Bar code	Name	Category	Quantity	Parameter	Type	Store
001	0000008039485734	Backhoe 110TLB	vehicle	0 piece		rental device	stock
002	0000008763845382	Truck TGS	vehicle	0 piece		rental device	stock
003	0000008773320538	Transporter E-350	vehicle	0 piece		rental device	stock
004	0000008772638718	Transporter E-350	vehicle	0 piece		rental device	stock
101	0000001235786428	Cement	construction material	50 kg		material	stock
102	0000001235454774	Armouring iron	construction material	100 m²		material	stock

Backhoe 110TLB, Rented: 1 piece, In stock: 0 piece, Total: 1 piece

Location	Person	Quantity	Date	Booking type	Rental period	Parameter	Note
retaining dam	Sanchez Angelo	1 piece	10/22/2009 11:5	rebook			

Master data Maintenance Documents

Article number: 001 Type: rental device Width: 3,000 m Height: 5,000 m Depth: 3,000 m

Tag/Bar code: 0000008039485734 Individual ID Parameter: 0,000 Unit: Weight: 3500,000 kg

Name: Backhoe 110TLB Register: Stock: stock

Serial number: 643287 Manufacturer: John Deere Stock area: parking

Quantity: 0 Min. stock: 0 piece Category: vehicle Stock subarea: area 1

Cost centre: 1-1234 Stock ground: car park01 Search

Count of Articles: 6

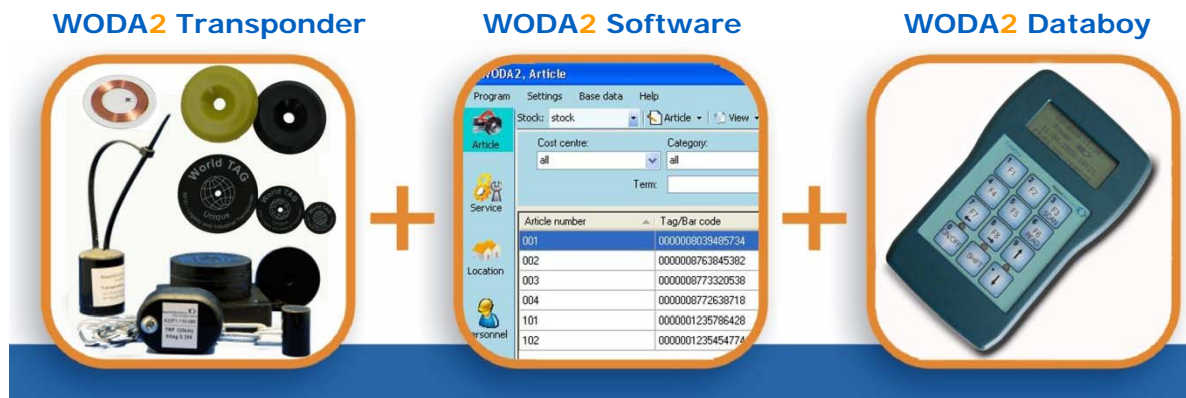
Communication with PDA stopped. Communication with Databay is stopped. Person 1206 4|108547.1649|163496.1185 Coordinate scan

In the WODA2 software you administer

- Tools, machines, material and other property lists
- Issuance of tools and machines
- Repair and maintenance
- Stocktaking/Inventories
- Locations (storage depots, construction sites, garages ...)
- Personnel
- Wireless communication
- Resource management (objects and manpower)

Customer benefit:

- Uniform system for the administration
- Clear marking and identification of the objects
- Efficient use of the tools and machines
- Tracking and clear representation of the distributed objects
- Paperless administration of the issuance and residence time of the tools and machines, with time stamp and employee number
- Paperless information about the current location of an object
- Automatic documentation of repair dates, servicing dates and maintenance dates
- Permanent, automatic and electronic stocktaking
- Monitoring of the construction site as well as stationary and mobile objects after the working hours
- Saving of time on account of improved criteria
- Investment minimization for new tools and machines



Summary:

- **WODA2** allows a quick and easy work performance and simplifies the process and administration tasks.
- The system integrates the essential information and data into the **WODA2** software and guarantees the current availability of manpower, machines and tools as well as operational readiness of the necessary process resources.

